

PROJECT: RENOVATION OF FMBO

LOCATION: 3rd Floor Old Annex Building

SCOPE OF WORK

1.0 GENERAL REQUIREMENTS

1.1 Mobilization

-To deliver the materials and mobilize the manpower for the renovation.

2.0 SITE WORKS

2.1 Demolition & hauling

2.2 Reworks of Affected Demolition

2.3 AS-Built Plan

3.0 REPLACEMENT OF MODULAR CUBICLE PARTITIONS

3.1 Supply and installation of modular cubicles:

3.1.1 Assistant Chief FMID

3.1.2 Assistant Chief BUDGET

3.1.3 Assistant Chief FINANCE

3.1.4 Secretary-Chief of Office

3.1.5 Staff

3.2 Modular Partitions for Head of Divisions

3.3 Accessories for Modular Cubicle

3.4. Reception Area

4.0 PAINTING WORKS

4.1 Repainting of the entire office internal walling.

4.2 Repainting/Retouching of affected areas

5.0 REPLACEMENT OF VINYL TILES

6.1 Replacement of entire Office flooring

6.0 ELECTRICAL WORKS

7.1 Installation/reinstallation of convenient outlets, wires, EMT pipes, etc.

7.0 CABLING WORKS

8.1 Termination of additional network outlets

including roughing-ins, category 6 cables, information outlets, faceplates, etc.

8.2 Relocation and re-termination of network outlets

8.3 Supply and installation Patch Panel 24 port UTP Category 6, Wire Manager, 24 Post 10/100 Managed Switch

PROJECT: RENOVATION OF FMBO
LOCATION: 3rd Floor Old Annex Building

SUMMARY OF COST

1.0 GENERAL REQUIREMENTS _____

2.0 SITE WORKS _____

3.0 REPLACEMENT OF MODULAR CUBICLE _____

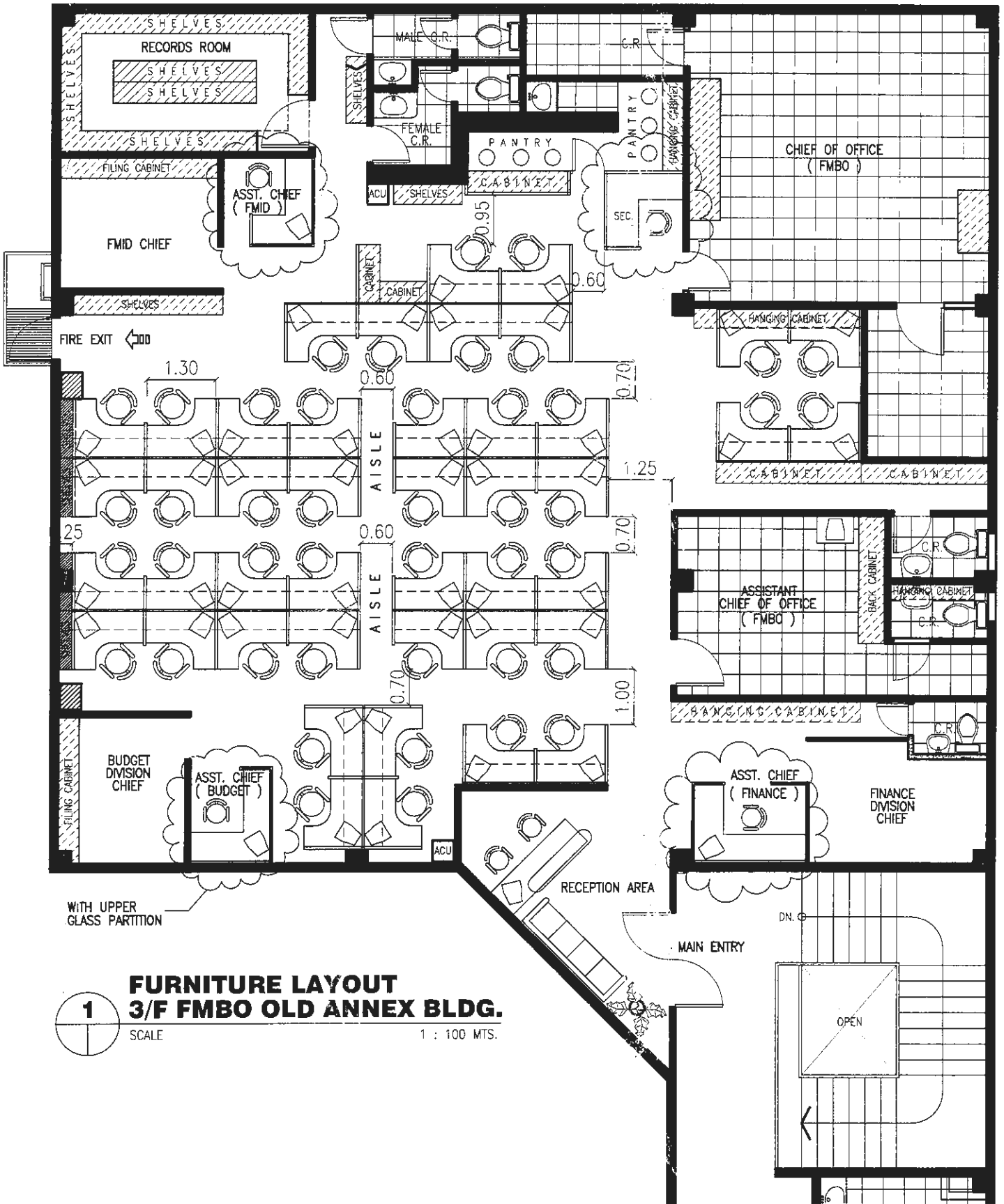
4.0 PAINTING WORKS _____

5.0 REPLACEMENT OF VINYL TILES _____

6.0 ELECTRICAL WORKS _____

7.0 CABLING WORKS _____

GRAND TOTAL COST P _____



1 FURNITURE LAYOUT
3/F FMBO OLD ANNEX BLDG.
 SCALE 1 : 100 MTS.

PROJECT: RENOVATION OF FMBO

LOCATION: 3rd Floor Old Annex Building

Bill of Materials & Cost Estimate

Description		Unit Cost	Amount
1.0 GENERAL REQUIREMENTS			
1.0 Lot	1.1 Mobilization -To deliver the materials and mobilize the manpower for the renovation.		
2.0 SITE WORKS			
1.0 Lot	2.1 Demolition & hauling		
1.0 Lot	2.2 Reworks of Affected Demolition		
1.0 Lot	2.3 AS-Built Plan		
		Sub Total	
3.0 REPLACEMENT OF MODULAR CUBICLE PARTITIONS			
3.1 Supply and installation of modular cubicles:			
Assistant Chief FMID			
pc	High Back Executive Chair, Leatherette Seat and Back rest, 5 Prong Chromed Steel Star Base w/ Heavy Duty Ballcasters, Pnuematic Gas Lift Height Adjustment, Tilt backrest adjustment, w/ armrest, 100kgs seating capacity, Color: Black		
1.0 pc	Laminated Glass Stripe partition - Upper Glass& Laminated Surface with Aluminum trims, channel& raceway, 1.2m(L) x 1.5m(H) x 45mm Thk.		
1.0 pc	Laminated Glass Stripe partition - Upper Glass& Laminated Surface with Aluminum trims, channel& raceway, 1.6m(L) x 1.5m(H) x 45mm Thk.		
1.0 pc	Laminated Glass Stripe partition - Upper Glass& Laminated Surface with Aluminum trims, channel& raceway, 0.6m(L) x 1.5m(H) x 45mm Thk.		
1.0 pc	Side Board Leg-laminated with PVC edge banding, 0.6m(L) x x 0.725m(H) x 25mm Thk.		
1.0 pc	Laminated Glass Stripe partition - Upper Glass& Laminated Surface with Aluminum trims, channel& raceway, 1.8m(L) x 1.5m(H) x 45mm Thk.		
1.0 pc	L-Shape Work top laminated table top with PVC Edge banding grpmets and table metal bracket. 1.6m(L) x 0.6m(W) x 0.60m(L) x 0.60m(W), 25mm Thk.		
Assistant Chief BUDGET			
pc	High Back Executive Chair, Leatherette Seat and Back rest, 5 Prong Chromed Steel Star Base w/ Heavy Duty Ballcasters, Pnuematic Gas Lift Height Adjustment, Tilt backrest adjustment, w/ armrest, 100kgs seating capacity, Color: Black		
1.0 pc	Laminated Glass Stripe partition - Laminated Surface with Aluminum trims, channel& raceway, 1.6m(L) x 1.5m(H) x 45mm Thk.		
1.0 pc	Laminated Glass Stripe partition - Upper Glass& Laminated Surface with Aluminum trims, channel& raceway, 0.6m(L) x 1.5m(H) x 45mm Thk.		
1.0 pc	Laminated Glass Stripe partition - Upper Glass& Laminated Surface with Aluminum trims, channel& raceway, 1.5m(L) x 1.5m(H) x 45mm Thk.		

Bill of Materials & Cost Estimate

	Description	Unit Cost	Amount
1.0 pc	Side Board Leg-laminated with PVC edge banding, 0.6m(L) x x 0.725m(H) x 25mm Thk.		
1.0 pc	L-Shape Work top laminated table top with PVC Edge banding grpmets and table metal bracket. 1.6m(L) x 0.6m(W) x 0.90m(L) x 0.60m(W), 25mm Thk.		
Assistant Chief FINANCE			
pc	High Back Executive Chair, Leatherette Seat and Back rest, 5 Prong Chromed Steel Star Base w/ Heavy Duty Ballcasters, Pnuematic Gas Lift Height Adjustment, Tilt backrest adjustment, w/ armrest, 100kgs seating capacity, Color: Black		
2.0 pc	Laminated Glass Stripe partition - Upper Glass& Laminated Surface with Aluminum trims, channel& raceway, 1.5m(L) x 1.5m(H) x 45mm Thk.		
2.0 pc	Laminated Glass Stripe partition - Upper Glass& Laminated Surface with Aluminum trims, channel& raceway, 0.6m(L) x 1.5m(H) x 45mm Thk.		
1.0 pc	Laminated Glass Stripe partition - Laminated Surface with Aluminum trims, channel& raceway, 2.1m(L) x 1.5m(H) x 45mm Thk.		
1.0 pc	L-Shape Work top laminated table top with PVC Edge banding grpmets and table metal bracket. 2.1m(L) x 0.6m(W) x 0.9m(L) x 0.60m(W), 25mm Thk.		
Secretary-Chief of Office			
pcs	High Back Staff Chair, Mesh Type back rest with Armrest, 5 Prong Chrome Star Base w/ Heavy Duty Ballcaster, Pnuematic Height Adjustment (gaslift), Chrome Base, Color: black		
1.0 pcs	Laminated Glass Stripe partition - Laminated Surface with Aluminum trims, channel& raceway, 1.5m(L) x 1.5m(H) x 45mm Thk.		
1.0 pcs	Laminated Glass Stripe partition - Upper Glass& Laminated Surface with Aluminum trims, channel& raceway, 1.5m(L) x 1.5m(H) x 45mm Thk.		
1.0 pc	Laminated Glass Stripe partition - Upper Glass& Laminated Surface with Aluminum trims, channel& raceway, 0.6m(L) x 1.5m(H) x 45mm Thk.		
1.0 pc	Continuous L-Shape Work top laminated table top with PVC Edge banding grommets and table metal bracket. 1.3m(L) x 0.6m(W) x 1.14m(L) x 0.3m(W), 25mm Thk.		
1.0 pcs	Counter Top-laminated top with pvc edge banding, prommets and table metal brackets, 1.5m (L) x 0.30m(W) x 25mm Thk.		
Staff			
pcs	High Back Staff Chair, Mesh Type back rest with Armrest, 5 Prong Chrome Star Base w/ Heavy Duty Ballcaster, Pnuematic Height Adjustment (gaslift), Chrome Base, Color: black		
40.0 pcs	Laminated Glass Stripe partition - Upper Glass& Laminated Surface with Aluminum trims, channel& raceway, 1.14m(L) x 1.5m(H) x 45mm Thk.		
26.0 pcs	Laminated Glass Stripe partition - Upper Glass& Laminated Surface with Aluminum trims, channel& raceway, 1.3m(L) x 1.5m(H) x 45mm Thk.		
20.0 pcs	Laminated Glass Stripe partition - Laminated Surface with		

Bill of Materials & Cost Estimate

	Description	Unit Cost	Amount
	Aluminum trims, channel& raceway, 0.6m(L) x 1.5m(H) x 45mm Thk.		
45.0 pcs	Continuous L-Shape Work top laminated table top with PVC Edge banding grommets and table metal bracket. 1.3m(L) x 0.6m(W) x 1.14m(L) x 0.3m(W), 25mm Thk.		
45.0 pcs	Counter Top-laminated top with pvc edge banding, prommets and table metal brackets, 1.3m (L) x 0.30m(W) x 25mm Thk.		
1.2 Modular Partitions for Head of Divisions			
3.0 Pcs	Executive Table, 1.6m L x 0.60m W, with side return, mobile pedestal and keyboard tray with glass top		
Pcs	Leatherette High Back Chair w/ armrest chrome base footing, german gas lift w/ permanent tilting mechanism with locking & unlocking system		
3.0 Pcs	Sled Visitors Chair in chrome frame		
1.0 set	Partition, 2.5m(W)x1.8m(H) with 4.5cm Thk. in glass (stripe frost design), if applicable, MDF		
1.0 set	Partition, 1.8m(W)x1.8m(H) with 4.5cm Thk. in glass (stripe frost design), if applicable, MDF		
1.0 set	Partition, 3.0m(W)x1.8m(H) with 4.5cm Thk. in glass (stripe frost design), if applicable, MDF		
1.0 set	Partition, 2.0m(W)x1.8m(H) with 4.5cm Thk. in glass (stripe frost design), if applicable, MDF		
1.0 set	Partition, 2.0m(W)x1.8m(H) with 4.5cm Thk. in glass (stripe frost design), if applicable, MDF		
1.0 set	Partition, 1.6m(W)x1.8m(H) with 4.5cm Thk. in glass (stripe frost design), if applicable, MDF		
3.0 set	Modular Swing Doors, 0.70m(W)x1.8m(H) with 4.5cm Thk. in glass (stripe frost design), if applicable, MDF		
1.3 Accessories for Modular Cubicle			
50.0 Pcs	Computer Keyboard		
51.0 Pcs	Mobile Cabinets, with centralized lock		
50.0 Pcs	CPU Holder, Heavy Duty		
1.4. Reception Area			
1.0 Pc	AH-8021 Reception Table Reception 1.6m(L)x0.80m(D)x1.05m(H) w/ attached Lateral Cabinets (Color is HX-) MDF scratch proof, MFC finish w/ edge bond		
1.0 Set	4-seater Gang Chair		
Pcs	Mid Back Staff Chair, Mesh Type with Armrest, Awivel Mechanism, Pnuematic Height Adjustment (gaslift), Chrome Base, Color: black		
	Sub Total		
4.0 REPAINTING OF WALLS			
5.0 Tins	Flat Latex (Non-odor)		
3.0 Tins	Semi- Gloss Latex White (Non-odor)		
5.0 Mtrs.	Sandpaper no.100's		
5.0 Gal	Paint Thinner		
5.0 mtrs.	Sandpaper # 100's		
5.0 Pcs.	SandPaper #150's		
5.0 Pcs.	SandPaper # 240's		
5.0 Pcs.	SandPaper #400's		
3.0 Kls.	Patching Compound		

Bill of Materials & Cost Estimate

Description		Unit Cost	Amount
5.0 Liters	Acri color Raw Sienna	_____	_____
5.0 Liters	Acri color Hansa yellow	_____	_____
5.0 Liters	Acri color Toloudine red	_____	_____
5.0 Liters	Acri color Lamp Black	_____	_____
5.0 Kls.	Waste Cotton (Single ply white)	_____	_____
4.0 Pcs.	Roller Paint w/ plate size 7"	_____	_____
4.0 Pcs.	Mini roller (cloth)	_____	_____
3.0 Pcs.	Paint Brush size "1"	_____	_____
3.0 Pcs.	Paint Brush size "2"	_____	_____
3.0 Pcs.	Paint Brush size 3"	_____	_____
Sub Total			_____
5.0 REPLACEMENT OF VINYL TILES			
2,370.0 Pcs.	0.30m x 0.30mx0 .30mm thk. Vinyl Tiles	_____	_____
30.0 gal	Vinyl Glue	_____	_____
Sub Total			_____
6.0 ELECTRICAL WORKS			
6.1 Installation/reinstallation of convenient outlets, wires, EMT pipes, etc.			
50.0 Sets	Relocation of Convenience outlet,2 gang and 3 prong,universal w/ face plate and utility/amco box.	_____	_____
2.0 box	THHN Wire, 3.5 mm2	_____	_____
1.0 box	THHN Wire, 2.00 mm2 (Green)	_____	_____
1.0 Pcs.	Treshold, 10Ft	_____	_____
1.0 box	Tox with Screw #7	_____	_____
5.0 Pcs.	Electrical tape,big.	_____	_____
Sub Total			_____
7.0 CABLING WORKS			
16.0 units	Termination of additional network outlets including roughing-ins, category 6 cables, information outlets, faceplates, etc.	_____	_____
30.0 Units	Relocation and re-termination of network outlets	_____	_____
1.0 unit	Patch Panel 24 port UTP Category 6	_____	_____
1.0 unit	Wire Manager	_____	_____
1.0 unit	24 Port 10/100 Managed Switch	_____	_____
1.0 unit	UPS 3 KVA	_____	_____
Sub-total			_____
GRAND TOTAL COST P			=====