

## **PROJECT: RENOVATION OF FMBO**

LOCATION: 3rd Floor Old Annex Building

### **SCOPE OF WORK**

#### **1.0 GENERAL REQUIREMENTS**

##### 1.1 Mobilization

- To deliver the materials and mobilize the manpower for the renovation.

#### **2.0 SITE WORKS**

- 2.1 Demolition & hauling
- 2.2 Reworks of Affected Demolition
- 2.3 AS-Built Plan

#### **3.0 REPLACEMENT OF MODULAR CUBICLE PARTITIONS**

- 3.1 Supply and installation of modular cubicles:
  - 3.1.1 Assistant Chief FMID
  - 3.1.2 Assistant Chief BUDGET
  - 3.1.3 Assistant Chief FINANCE
  - 3.1.4 Secretary-Chief of Office
  - 3.1.5 Staff
- 3.2 Modular Partitions for Head of Divisions
- 3.3 Accessories for Modular Cubicle
- 3.4. Reception Area

#### **4.0 PAINTING WORKS**

- 4.1 Repainting of the entire office internal walling.
- 4.2 Repainting/Retouching of affected areas

#### **5.0 REPLACEMENT OF VINYL TILES**

- 6.1 Replacement of entire Office flooring

#### **6.0 ELECTRICAL WORKS**

- 7.1 Installation/reinstallation of convenient outlets, wires, EMT pipes, etc.

#### **7.0 CABLING WORKS**

- 8.1 Termination of additional network outlets including roughing-ins, category 6 cables, information outlets, faceplates, etc.
- 8.2 Relocation and re-termination of network outlets
- 8.3 Supply and installation Patch Panel 24 port UTP Category 6, Wire Manager, 24 Post 10/100 Managed Switch

**PROJECT: RENOVATION OF FMBO**  
LOCATION: 3rd Floor Old Annex Building

**SUMMARY OF COST**

|   |       |
|---|-------|
| <b>1.0 GENERAL REQUIREMENTS</b>           | _____ |
| <b>2.0 SITE WORKS</b>                     | _____ |
| <b>3.0 REPLACEMENT OF MODULAR CUBICLE</b> | _____ |
| <b>4.0 PAINTING WORKS</b>                 | _____ |
| <b>5.0 REPLACEMENT OF VINYL TILES</b>     | _____ |
| <b>6.0 ELECTRICAL WORKS</b>               | _____ |
| <b>7.0 CABLING WORKS</b>                  | _____ |
| <b>GRAND TOTAL COST P</b>                 | ===== |

**PROJECT: RENOVATION OF FMBO**

LOCATION: 3rd Floor Old Annex Building

**Bill of Materials & Cost Estimate**

| Description  |   | Unit Cost        | Amount |
|--|---|------------------|--------|
| <b>1.0 GENERAL REQUIREMENTS</b>                      |   |                  |        |
| 1.0 Lot  | 1.1 Mobilization<br>-To deliver the materials and mobilize the manpower for the renovation.   |                  |        |
| <b>2.0 SITE WORKS</b>                                |   |                  |        |
| 1.0 Lot  | 2.1 Demolition & hauling  |                  |        |
| 1.0 Lot  | 2.2 Reworks of Affected Demolition  |                  |        |
| 1.0 Lot  | 2.3 AS-Built Plan   |                  |        |
|  |   | <b>Sub Total</b> |        |
| <b>3.0 REPLACEMENT OF MODULAR CUBICLE PARTITIONS</b> |   |                  |        |
| 3.1 Supply and installation of modular cubicles:     |   |                  |        |
| Assistant Chief FMID                                 |   |                  |        |
| pc   | High Back Executive Chair, Leatherette Seat and Back rest, 5 Prong Chromed Steel Star Base w/ Heavy Duty Ballcasters, Pnuematic Gas Lift Height Adjustment, Tilt backrest adjustment, w/ armrest, 100kgs seating capacity, Color: Black |                  |        |
| 1.0 pc   | Laminated Glass Stripe partition - Upper Glass& Laminated Surface with Aluminum trims, channel& raceway, 1.2m(L) x 1.5m(H) x 45mm Thk.  |                  |        |
| 1.0 pc   | Laminated Glass Stripe partition - Upper Glass& Laminated Surface with Aluminum trims, channel& raceway, 1.6m(L) x 1.5m(H) x 45mm Thk.  |                  |        |
| 1.0 pc   | Laminated Glass Stripe partition - Upper Glass& Laminated Surface with Aluminum trims, channel& raceway, 0.6m(L) x 1.5m(H) x 45mm Thk.  |                  |        |
| 1.0 pc   | Side Board Leg-laminated with PVC edge banding, 0.6m(L) x x 0.725m(H) x 25mm Thk.   |                  |        |
| 1.0 pc   | Laminated Glass Stripe partition - Upper Glass& Laminated Surface with Aluminum trims, channel& raceway, 1.8m(L) x 1.5m(H) x 45mm Thk.  |                  |        |
| 1.0 pc   | L-Shape Work top laminated table top with PVC Edge banding grpmnets and table metal bracket. 1.6m(L) x 0.6m(W) x 0.60m(L) x 0.60m(W), 25mm Thk.   |                  |        |
| Assistant Chief BUDGET                               |   |                  |        |
| pc   | High Back Executive Chair, Leatherette Seat and Back rest, 5 Prong Chromed Steel Star Base w/ Heavy Duty Ballcasters, Pnuematic Gas Lift Height Adjustment, Tilt backrest adjustment, w/ armrest, 100kgs seating capacity, Color: Black |                  |        |
| 1.0 pc   | Laminated Glass Stripe partition - Laminated Surface with Aluminum trims, channel& raceway, 1.6m(L) x 1.5m(H) x 45mm Thk.   |                  |        |
| 1.0 pc   | Laminated Glass Stripe partition - Upper Glass& Laminated Surface with Aluminum trims, channel& raceway, 0.6m(L) x 1.5m(H) x 45mm Thk.  |                  |        |
| 1.0 pc   | Laminated Glass Stripe partition - Upper Glass& Laminated Surface with Aluminum trims, channel& raceway, 1.5m(L) x 1.5m(H) x 45mm Thk.  |                  |        |

## Bill of Materials & Cost Estimate

|                           | Description   | Unit Cost | Amount |
|---------------------------|---|-----------|--------|
| 1.0 pc                    | Side Board Leg-laminated with PVC edge banding, 0.6m(L) x x 0.725m(H) x 25mm Thk.   |           |        |
| 1.0 pc                    | L-Shape Work top laminated table top with PVC Edge banding grpmets and table metal bracket. 1.6m(L) x 0.6m(W) x 0.90m(L) x 0.60m(W), 25mm Thk.  |           |        |
| Assistant Chief FINANCE   |   |           |        |
| pc                        | High Back Executive Chair, Leatherette Seat and Back rest, 5 Prong Chromed Steel Star Base w/ Heavy Duty Ballcasters, Pnuematic Gas Lift Height Adjustment, Tilt backrest adjustment, w/ armrest, 100kgs seating capacity, Color: Black |           |        |
| 2.0 pc                    | Laminated Glass Stripe partition - Upper Glass& Laminated Surface with Aluminum trims, channel& raceway, 1.5m(L) x 1.5m(H) x 45mm Thk.  |           |        |
| 2.0 pc                    | Laminated Glass Stripe partition - Upper Glass& Laminated Surface with Aluminum trims, channel& raceway, 0.6m(L) x 1.5m(H) x 45mm Thk.  |           |        |
| 1.0 pc                    | Laminated Glass Stripe partition - Laminated Surface with Aluminum trims, channel& raceway, 2.1m(L) x 1.5m(H) x 45mm Thk.   |           |        |
| 1.0 pc                    | L-Shape Work top laminated table top with PVC Edge banding grpmets and table metal bracket. 2.1m(L) x 0.6m(W) x 0.9m(L) x 0.60m(W), 25mm Thk.   |           |        |
| Secretary-Chief of Office |   |           |        |
| pcs                       | High Back Staff Chair, Mesh Type back rest with Armrest, 5 Prong Chrome Star Base w/ Heavy Duty Ballcaster, Pnuematic Height Adjustment (gaslift), Chrome Base, Color: black  |           |        |
| 1.0 pcs                   | Laminated Glass Stripe partition - Laminated Surface with Aluminum trims, channel& raceway, 1.5m(L) x 1.5m(H) x 45mm Thk.   |           |        |
| 1.0 pcs                   | Laminated Glass Stripe partition - Upper Glass& Laminated Surface with Aluminum trims, channel& raceway, 1.5m(L) x 1.5m(H) x 45mm Thk.  |           |        |
| 1.0 pc                    | Laminated Glass Stripe partition - Upper Glass& Laminated Surface with Aluminum trims, channel& raceway, 0.6m(L) x 1.5m(H) x 45mm Thk.  |           |        |
| 1.0 pc                    | Continuous L-Shape Work top laminated table top with PVC Edge banding grommets and table metal bracket. 1.3m(L) x 0.6m(W) x 1.14m(L) x 0.3m(W), 25mm Thk.   |           |        |
| 1.0 pcs                   | Counter Top-laminated top with pvc edge banding, prommets and table metal brackets, 1.5m (L) x 0.30m(W) x 25mm Thk.   |           |        |
| Staff                     |   |           |        |
| pcs                       | High Back Staff Chair, Mesh Type back rest with Armrest, 5 Prong Chrome Star Base w/ Heavy Duty Ballcaster, Pnuematic Height Adjustment (gaslift), Chrome Base, Color: black  |           |        |
| 40.0 pcs                  | Laminated Glass Stripe partition - Upper Glass& Laminated Surface with Aluminum trims, channel& raceway, 1.14m(L) x 1.5m(H) x 45mm Thk.   |           |        |
| 26.0 pcs                  | Laminated Glass Stripe partition - Upper Glass& Laminated Surface with Aluminum trims, channel& raceway, 1.3m(L) x 1.5m(H) x 45mm Thk.  |           |        |
| 20.0 pcs                  | Laminated Glass Stripe partition - Laminated Surface with   |           |        |

## Bill of Materials & Cost Estimate

|  | Description   | Unit Cost | Amount |
|--|---|-----------|--------|
|  | Aluminum trims, channel & raceway, 0.6m(L) x 1.5m(H) x 45mm Thk.  |           |        |
| 45.0 pcs                                     | Continuous L-Shape Work top laminated table top with PVC Edge banding grommets and table metal bracket. 1.3m(L) x 0.6m(W) x 1.14m(L) x 0.3m(W), 25mm Thk.   |           |        |
| 45.0 pcs                                     | Counter Top-laminated top with pvc edge banding, grommets and table metal brackets, 1.3m (L) x 0.30m(W) x 25mm Thk.   |           |        |
| 1.2 Modular Partitions for Head of Divisions |   |           |        |
| 3.0 Pcs                                      | Executive Table, 1.6m L x 0.60m W, with side return, mobile pedestal and keyboard tray with glass top   |           |        |
| Pcs  | Leatherette High Back Chair w/ armrest chrome base footing, german gas lift w/ permanent tilting mechanism with locking & unlocking system                  |           |        |
| 3.0 Pcs                                      | Sled Visitors Chair in chrome frame   |           |        |
| 1.0 set                                      | Partition, 2.5m(W)x1.8m(H) with 4.5cm Thk. in glass (stripe frost design), if applicable, MDF   |           |        |
| 1.0 set                                      | Partition, 1.8m(W)x1.8m(H) with 4.5cm Thk. in glass (stripe frost design), if applicable, MDF   |           |        |
| 1.0 set                                      | Partition, 3.0m(W)x1.8m(H) with 4.5cm Thk. in glass (stripe frost design), if applicable, MDF   |           |        |
| 1.0 set                                      | Partition, 2.0m(W)x1.8m(H) with 4.5cm Thk. in glass (stripe frost design), if applicable, MDF   |           |        |
| 1.0 set                                      | Partition, 2.0m(W)x1.8m(H) with 4.5cm Thk. in glass (stripe frost design), if applicable, MDF   |           |        |
| 1.0 set                                      | Partition, 1.6m(W)x1.8m(H) with 4.5cm Thk. in glass (stripe frost design), if applicable, MDF   |           |        |
| 3.0 set                                      | Modular Swing Doors, 0.70m(W)x1.8m(H) with 4.5cm Thk. in glass (stripe frost design), if applicable, MDF  |           |        |
| 1.3 Accessories for Modular Cubicle          |   |           |        |
| 50.0 Pcs                                     | Computer Keyboard   |           |        |
| 51.0 Pcs                                     | Mobile Cabinets, with centralized lock  |           |        |
| 50.0 Pcs                                     | CPU Holder, Heavy Duty  |           |        |
| 1.4. Reception Area                          |   |           |        |
| 1.0 Pc                                       | AH-8021 Reception Table<br>Reception 1.6m(L)x0.80m(D)x1.05m(H)<br>w/ attached Lateral Cabinets (Color is HX-)<br>MDF scratch proof, MFC finish w/ edge bond |           |        |
| 1.0 Set                                      | 4-seater Gang Chair   |           |        |
| pcs  | Mid Back Staff Chair, Mesh Type with Armrest, Awivel Mechanism, Pnuematic Height Adjustment (gaslift), Chrome Base, Color: black                            |           |        |
|  | <b>Sub Total</b>  |           |        |
| <b>4.0 REPAINTING OF WALLS</b>               |   |           |        |
| 5.0 Tins                                     | Flat Latex (Non-odor)   |           |        |
| 3.0 Tins                                     | Semi- Gloss Latex White (Non-odor)  |           |        |
| 5.0 Mtrs.                                    | Sandpaper no.100's  |           |        |
| 5.0 Gal                                      | Paint Thinner   |           |        |
| 5.0 mtrs.                                    | Sandpaper # 100's   |           |        |
| 5.0 Pcs.                                     | SandPaper #150's  |           |        |
| 5.0 Pcs.                                     | SandPaper # 240's   |           |        |
| 5.0 Pcs.                                     | SandPaper #400's  |           |        |
| 3.0 Kls.                                     | Patching Compound   |           |        |

**Bill of Materials & Cost Estimate**

| Description |                                   | Unit Cost | Amount |
|-------------|-----------------------------------|-----------|--------|
| 5.0 Liters  | Acricolor Raw Sienna              | _____     | _____  |
| 5.0 Liters  | Acricolor Hansa yellow            | _____     | _____  |
| 5.0 Liters  | Acricolor Toluidine red           | _____     | _____  |
| 5.0 Liters  | Acricolor Lamp Black              | _____     | _____  |
| 5.0 Kls.    | Waste Cotton ( Single ply white ) | _____     | _____  |
| 4.0 Pcs.    | Roller Paint w/ plate size 7"     | _____     | _____  |
| 4.0 Pcs.    | Mini roller ( cloth )             | _____     | _____  |
| 3.0 Pcs.    | Paint Brush size "1"              | _____     | _____  |
| 3.0 Pcs.    | Paint Brush size "2"              | _____     | _____  |
| 3.0 Pcs.    | Paint Brush size 3"               | _____     | _____  |

**Sub Total** \_\_\_\_\_

**5.0 REPLACEMENT OF VINYL TILES**

|              |                                       |       |       |
|--------------|---------------------------------------|-------|-------|
| 2,370.0 Pcs. | 0.30m x 0.30mx0.30mm thk. Vinyl Tiles | _____ | _____ |
| 30.0 gal     | Vinyl Glue                            | _____ | _____ |

**Sub Total** \_\_\_\_\_

**6.0 ELECTRICAL WORKS**

6.1 Installation/reinstallation of convenient outlets, wires, EMT pipes, etc.

|           |   |       |       |
|-----------|---|-------|-------|
| 50.0 Sets | Relocation of Convenience outlet, 2 gang and 3 prong, universal w/ face plate and utility/amco box. | _____ | _____ |
| 2.0 box   | THHN Wire, 3.5 mm2  | _____ | _____ |
| 1.0 box   | THHN Wire, 2.00 mm2 (Green)   | _____ | _____ |
| 1.0 Pcs.  | Threshold, 10Ft   | _____ | _____ |
| 1.0 box   | Tox with Screw #7   | _____ | _____ |
| 5.0 Pcs.  | Electrical tape, big.   | _____ | _____ |

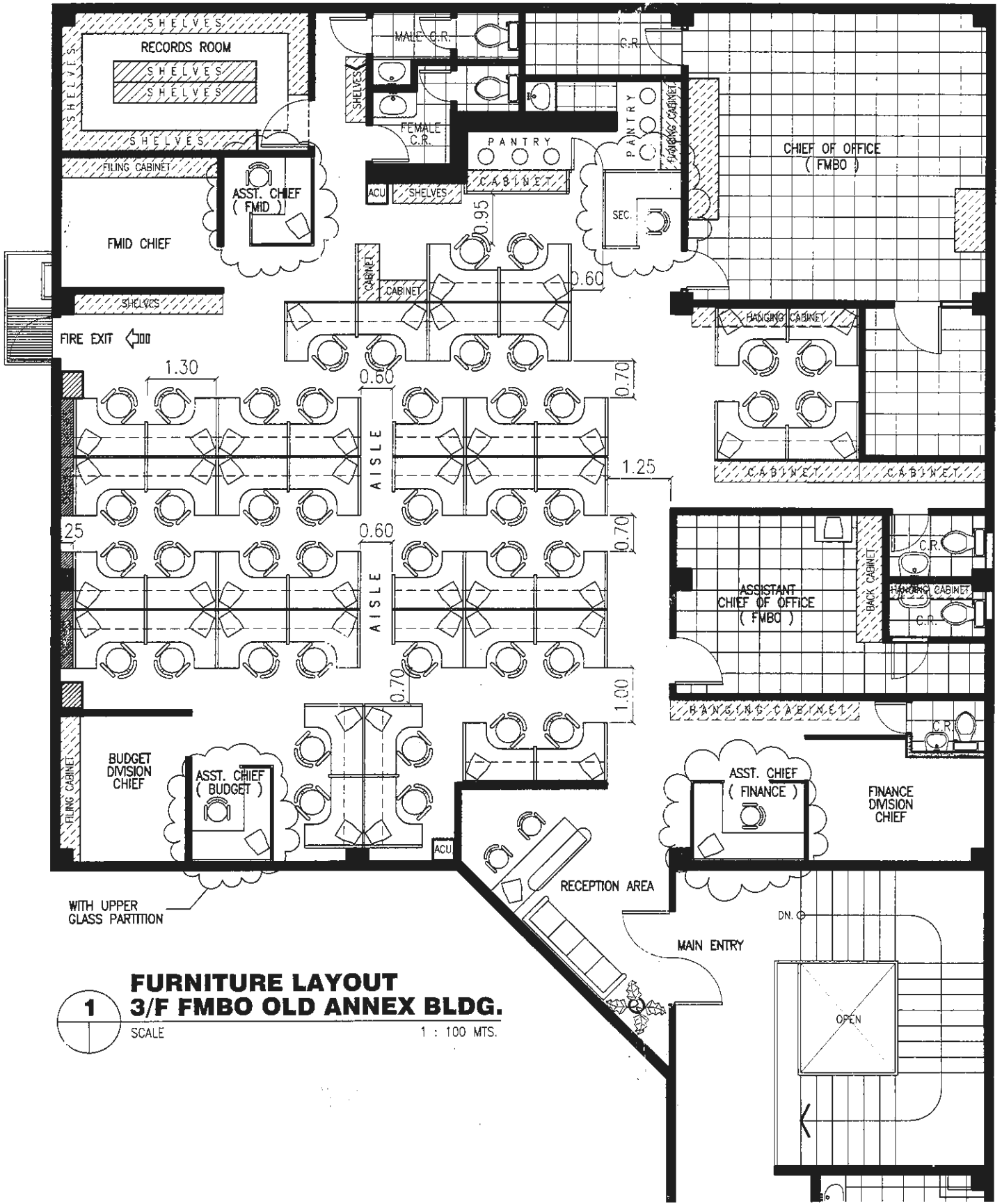
**Sub Total** \_\_\_\_\_

**7.0 CABLING WORKS**

|            |  |       |       |
|------------|--|-------|-------|
| 16.0 units | Termination of additional network outlets including roughing-ins, category 6 cables, information outlets, faceplates, etc. | _____ | _____ |
| 30.0 Units | Relocation and re-termination of network outlets   | _____ | _____ |
| 1.0 unit   | Patch Panel 24 port UTP Category 6   | _____ | _____ |
| 1.0 unit   | Wire Manager   | _____ | _____ |
| 1.0 unit   | 24 Port 10/100 Managed Switch  | _____ | _____ |
| 1.0 unit   | UPS 3 KVA  | _____ | _____ |

**Sub-total** \_\_\_\_\_

**GRAND TOTAL COST P** \_\_\_\_\_



**1 FURNITURE LAYOUT**  
**3/F FMBO OLD ANNEX BLDG.**  
 SCALE 1 : 100 MTS.