

**PROJECT: RENOVATION OF THE OFFICE OF THE JUDICIAL AND BAR COUNCIL'S  
OFFICE OF THE EXECUTIVE OFFICER & OPERATING OFFICES**

LOCATION: 2nd Floor, Supreme Court-Court of Appeals (SCCA) Building

**BILL OF MATERIALS AND COST ESTIMATE**

Item	Description	Quantity	Unit	Unit Cost	Amount
<b>I GENERAL REQUIREMENTS</b>					
I.1	Mobilization	1.00	Lot	_____	_____
I.2	PPE & Safety	1.00	Lot	_____	_____
I.3	Contract Close-out				
	a) Cleaning/Clearing	1.00	Lot	_____	_____
	b) Demobilization	1.00	Lot	_____	_____
I.4	As-Built Plans	1.00	Lot	_____	_____
				<b>Sub-total</b>	<b>_____</b>
<b>II SITE WORKS</b>					
II.1	Site Cleaning, Clearing & Disposal of of construction debris	1.00	Lot	_____	_____
II.2	Removal of existing ceramic floor tile & wall tiles @ Comfr	1.00	Lot	_____	_____
II.3	Removal of existing ceiling	1.00	Lot	_____	_____
II.4	Reworks affected by the renovation	1.00	Lot	_____	_____
				<b>Sub-total</b>	<b>_____</b>
<b>III CIVIL WORKS</b>					
A.1	Construction of Partition Walls @ ORSN, OPDR& OAFS				
	1/4" Plywood 4' x 8'	50.00	Pcs.	_____	_____
	2" x 3" x 10' KD S4S Lumber	90.00	Pcs.	_____	_____
	1" x 4" x 10' KD Baseboards	45.00	Pcs.	_____	_____
	Miscellaneous ( Nails,wood glue,etc.)	1.00	Lot	_____	_____
A.2	Construction of Hanging Cabinets & Shelves/Cabinets				
	3/4 Plywood 4' x 8' (Sta. Clara)	85.00	Pcs.	_____	_____
	1/2" x 2" x 8' KD S4S Liston	130.00	Pcs.	_____	_____
	Drawer Guide 20" (Amerilock)	20.00	pairs	_____	_____
	Concealed hinges,Inset ( Amerilock )	45.00	pairs	_____	_____
	Drawer lock	48.00	Pcs.	_____	_____
	Cabinet Handle	90.00	Pcs.	_____	_____
	Miscellaneous (Nails,wood glue,etc.)	1.00	Lot	_____	_____
A.3	Replacement of Ceiling				
	1/2" x 2' x 4' Laminated Boral Board	380.00	Pcs.	_____	_____
	Main Tee Runner 12'	120.00	Pcs.	_____	_____
	Cross Brace 4'	390.00	Pcs.	_____	_____
	3/8" x 4" x 8"Hardieflex	18.00	Pcs.	_____	_____
	Metal Furring	54.00	Pcs.	_____	_____
	Miscellaneous (Revits,etc.)	1.00	Lot	_____	_____
A.4	Doors & Openings				
	Flush Door, 0.90 m x 2.1m w/ Jambs Complete w/ accessories	1.00	Set	_____	_____
	Flush Door w/ Jamb, 0.8 x 2.1m Complete w/ accessories	1.00	Set	_____	_____
A.5	Construction of new CR & Rehabilitation of existing Comfort Rooms				
	Portland Cement	30.00	Bags	_____	_____
	Sand	160.00	Bags	_____	_____
	CHB #4	145.00	Pcs	_____	_____
	10mm Dia x 6.0m RSB	10.00	Pcs	_____	_____
	0.40m x 0.40m Ceramic Floor Tiles Un-glazed	220.00	Pcs	_____	_____
	0.40m x 0.40m Ceramic Wall Tiles Glazed, (2.6m H)	82.00	Pcs	_____	_____
	Tile Adhesive, ABC	20.00	Bags	_____	_____
	Tile Grout	15.00	Kgs	_____	_____
	Pipes & fittings, etc.	1.00	Lot	_____	_____
	Water Closet , w/ Complete Fittings, American Standard	4.00	Set	_____	_____
	Floor drain	4.00	Pcs	_____	_____

## BILL OF MATERIALS AND COST ESTIMATE

Item	Description	Quantity	Unit	Unit Cost	Amount
	Lavatory, w/ Fittings, American Standard	3.00	Set	_____	_____
	Lavatory Faucet, Stainless	3.00	Set	_____	_____
	Vanity Mirror (1.2m x 0.8m)	3.00	Pcs	_____	_____
	Bidet	4.00	Set	_____	_____
	Tissue Paper Holder, Stainless	4.00	Pcs	_____	_____
A.6	Rehabilitation of Pantry Area				
	Granite Stone for Counter (design & color subject for appr)	7.0	Sq. M.	_____	_____
	Kitchen Sink-Stainless	2.0	Set	_____	_____
	Kitchen Faucet	2.0	Pc	_____	_____
	0.60m x 0.60m Ceramic Tiles	35.00	Pc	_____	_____
	Tile Adhesive, ABC	6.00	Bags	_____	_____
	Tile Grout	5.00	Kgs	_____	_____
	Pipes & fittings, etc.	1.00	Lot	_____	_____
			<b>Sub-total</b>	_____	_____

### IV SUPPLY & INSTALLATION OF MODULAR CUBICLES & FURNITURES

#### A. OFFICE OF THE EXECUTIVE OFFICER

##### A.1 Executive Officer

Exec. Table, 1.8m(W)x0.8m(D)x0.75m(H) with attached 3 drawers cabinet, lateral Cabinets	1.0	Set	_____	_____
0.9m(W)x0.5m(D)x0.75m(H), (Color & design is for Apprc				
Executive Chair	1.0	Set	_____	_____
Visitors Chairs	2.0	Set	_____	_____
3-Seater Sofa	1.0	Set	_____	_____
Coffee Table - 2 Seaters	1.0	Set	_____	_____

##### A.2 L-Type Modular Cubicle - 3 Units

Laminated Glass Stripe partition in steel backing- Laminated Surface with Aluminum trims, channel& raceway, 1.6m(L) x 1.6m(H) x 45mm Thk.	3.0	Pcs	_____	_____
Laminated Glass Stripe partition - Upper Glass& Laminated Surface with Aluminum trims, channel& raceway, 1.5m(L) x 1.6m(H) x 45mm Thk.	3.0	Pcs	_____	_____
Laminated Glass Stripe partition - Upper Glass& Laminated Surface with Aluminum trims, channel& raceway, 0.70m(L) x 1.6m(H) x 45mm Thk.	3.0	Pcs	_____	_____
Table top with PVC Edge banding grommets and table metal bracket. 1.50m(L) x 0.6m(W) , 25mm Thk.	3.0	Pcs	_____	_____
Table top with PVC Edge banding grommets and table metal bracket. 1.00m(L) x 0.45m(W) x 0.60m(L) , 25mm	3.0	Pcs	_____	_____
Modular File Cabinet	3.0	Pc	_____	_____
Computer Keyboard	3.0	Pcs	_____	_____
Mobile Cabinets, with centralized lock	3.0	Pcs	_____	_____
CPU Holder, Heavy Duty	3.0	Pcs	_____	_____

##### A.3 Staff

Laminated Glass Stripe partition - Upper Glass& Laminated Surface with Aluminum trims, channel& raceway, 1.2m(L) x 1.2m(H) x 45mm Thk.	4.0	Pc	_____	_____
Laminated Glass Stripe partition - Upper Glass& Laminated Surface with Aluminum trims, channel& raceway, 0.70m(L) x 1.2m(H) x 45mm Thk.	9.0	Pc	_____	_____
Table top with PVC Edge banding grpmets and table metal bracket. 1.20m(L) x 0.6m(W), 25mm Thk.	6.0	Pc	_____	_____
Modular File Rack	6.0	Pc	_____	_____
Computer Keyboard	6.0	Pcs	_____	_____
Mobile Cabinets, with centralized lock	6.0	Pcs	_____	_____
CPU Holder, Heavy Duty	6.0	Pcs	_____	_____

#### B. ORSN

##### B.1 Chief ORSN

## BILL OF MATERIALS AND COST ESTIMATE

Item	Description	Quantity	Unit	Unit Cost	Amount
	2-Seater Sofa	1.0	Set	_____	_____
	Side Table	1.0	Set	_____	_____
	Laminated Glass Stripe partition - Upper Glass& Laminated Surface with Aluminum trims, channel& raceway 3.0m(L) x 1.8m(H) x 45mm thk. w/ swing door	1.0	Pcs	_____	_____
	Laminated Glass Stripe partition - Upper Glass& Laminated Surface with Aluminum trims, channel& raceway 3.8m(L) x 1.8m(H) x 45mm thk.	1.0	Pcs	_____	_____
<b>B.2</b>	<b>L-Type Modular Cubicle - 2 Units</b>				
	Laminated Glass Stripe partition in steel backing- Laminated Surface with Aluminum trims, channel& raceway, 1.6m(L) x 1.6m(H) x 45mm Thk.	2.0	Pcs	_____	_____
	Laminated Glass Stripe partition - Upper Glass& Laminated Surface with Aluminum trims, channel& raceway, 1.5m(L) x 1.6m(H) x 45mm Thk.	2.0	Pcs	_____	_____
	Laminated Glass Stripe partition - Upper Glass& Laminated Surface with Aluminum trims, channel& raceway, 0.70m(L) x 1.6m(H) x 45mm Thk.	2.0	Pcs	_____	_____
	Table top with PVC Edge banding grommets and table metal bracket. 1.50m(L) x 0.6m(W) , 25mm Thk.	2.0	Pcs	_____	_____
	Table top with PVC Edge banding grommets and table metal bracket. 1.00m(L) x 0.45m(W) x 0.60m(L) , 25mm	2.0	Pcs	_____	_____
	Modular File Cabinet w/ cover	2.0	Pc	_____	_____
	Computer Keyboard	2.0	Pcs	_____	_____
	Mobile Cabinets, with centralized lock	2.0	Pcs	_____	_____
	CPU Holder, Heavy Duty	2.0	Pcs	_____	_____
<b>B.3</b>	<b>Staff</b>				
	Laminated Glass Stripe partition - Upper Glass& Laminated Surface with Aluminum trims, channel& raceway, 1.2m(L) x 1.2m(H) x 45mm Thk.	18.0	Pc	_____	_____
	Laminated Glass Stripe partition - Upper Glass& Laminated Surface with Aluminum trims, channel& raceway, 0.70m(L) x 1.2m(H) x 45mm Thk.	30.0	Pc	_____	_____
	Table top with PVC Edge banding grpmets and table metal bracket. 1.20m(L) x 0.6m(W), 25mm Thk.	22.0	Pc	_____	_____
	Modular File Rack	22.0	Pc	_____	_____
	Computer Keyboard	22.0	Pcs	_____	_____
	Mobile Cabinets, with centralized lock	22.0	Pcs	_____	_____
	CPU Holder, Heavy Duty	22.0	Pcs	_____	_____
<b>C.</b>	<b>OAFS</b>				
<b>C.1</b>	<b>Chief OAFS</b>				
	2-Seater Sofa	1.0	Set	_____	_____
	Side Table	1.0	Set	_____	_____
	Laminated Glass Stripe partition - Upper Glass& Laminated Surface with Aluminum trims, channel& raceway 5.64m(L) x 1.8m(H) x 45mm thk. w/ swing door	1.0	Pcs	_____	_____
<b>C.2</b>	<b>L-Type Modular Cubicle - 3 Units</b>				
	Laminated Glass Stripe partition in steel backing- Laminated Surface with Aluminum trims, channel& raceway, 1.6m(L) x 1.6m(H) x 45mm Thk.	3.0	Pcs	_____	_____
	Laminated Glass Stripe partition - Upper Glass& Laminated Surface with Aluminum trims, channel& raceway, 1.5m(L) x 1.6m(H) x 45mm Thk.	3.0	Pcs	_____	_____
	Laminated Glass Stripe partition - Upper Glass& Laminated Surface with Aluminum trims, channel& raceway, 0.70m(L) x 1.6m(H) x 45mm Thk.	3.0	Pcs	_____	_____
	Table top with PVC Edge banding grommets and table metal bracket. 1.50m(L) x 0.6m(W) , 25mm Thk.	3.0	Pcs	_____	_____

## BILL OF MATERIALS AND COST ESTIMATE

Item	Description	Quantity	Unit	Unit Cost	Amount
	Table top with PVC Edge banding grommets and table metal bracket. 1.00m(L) x 0.45m(W) x 0.60m(L) , 25mm	3.0	Pcs	_____	_____
	Modular File Cabinet w/ cover	3.0	Pc	_____	_____
	Computer Keyboard	3.0	Pcs	_____	_____
	Mobile Cabinets, with centralized lock	3.0	Pcs	_____	_____
	CPU Holder, Heavy Duty	3.0	Pcs	_____	_____
<b>C.3</b>	<b>Staff</b>				
	Laminated Glass Stripe partition - Upper Glass& Laminated Surface with Aluminum trims, channel& raceway, 1.2m(L) x 1.2m(H) x 45mm Thk.	4.0	Pcs	_____	_____
	Laminated Glass Stripe partition - Upper Glass& Laminated Surface with Aluminum trims, channel& raceway, 0.70m(L) x 1.2m(H) x 45mm Thk.	6.0	Pcs	_____	_____
	Laminated Glass Stripe partition - Upper Glass& Laminated Surface with Aluminum trims, channel& raceway, 1.2m(L) x 1.1m(H) x 45mm Thk.	2.0	Pcs	_____	_____
	Laminated Glass Stripe partition - Upper Glass& Laminated Surface with Aluminum trims, channel& raceway, 0.70m(L) x 1.1m(H) x 45mm Thk.	3.0	Pcs	_____	_____
	Table top with PVC Edge banding grpmets and table metal bracket. 1.20m(L) x 0.6m(W), 25mm Thk.	6.0	Pcs	_____	_____
	Modular File Rack	4.0	Pcs	_____	_____
	Computer Keyboard	6.0	Pcs	_____	_____
	Mobile Cabinets, with centralized lock	6.0	Pcs	_____	_____
	CPU Holder, Heavy Duty	6.0	Pcs	_____	_____
<b>D</b>	<b>OPDR</b>				
<b>D.1</b>	<b>Chief OPDR</b>				
	2-Seater Sofa	1.0	Set	_____	_____
	Side Table	1.0	Set	_____	_____
	Laminated Glass Stripe partition - Upper Glass& Laminated Surface with Aluminum trims, channel& raceway 3.0m(L) x 1.8m(H) x 45mm thk. w/ swing door	1.0	Pcs	_____	_____
	Laminated Glass Stripe partition - Upper Glass& Laminated Surface with Aluminum trims, channel& raceway 4.38m(L) x 1.8m(H) x 45mm thk.	1.0	Pcs	_____	_____
<b>D.2</b>	<b>L-Type Modular Cubicle - 3 Units</b>				
	Laminated Glass Stripe partition in steel backing- Laminated Surface with Aluminum trims, channel& raceway, 1.6m(L) x 1.6m(H) x 45mm Thk.	3.0	Pcs	_____	_____
	Laminated Glass Stripe partition - Upper Glass& Laminated Surface with Aluminum trims, channel& raceway, 1.5m(L) x 1.6m(H) x 45mm Thk.	3.0	Pcs	_____	_____
	Laminated Glass Stripe partition - Upper Glass& Laminated Surface with Aluminum trims, channel& raceway, 0.70m(L) x 1.6m(H) x 45mm Thk.	3.0	Pcs	_____	_____
	Table top with PVC Edge banding grommets and table metal bracket. 1.50m(L) x 0.6m(W) , 25mm Thk.	3.0	Pcs	_____	_____
	Table top with PVC Edge banding grommets and table metal bracket. 1.00m(L) x 0.45m(W) x 0.60m(L) , 25mm	3.0	Pcs	_____	_____
	Modular File Cabinet	3.0	Pcs	_____	_____
	Computer Keyboard	3.0	Pcs	_____	_____
	Mobile Cabinets, with centralized lock	3.0	Pcs	_____	_____
	CPU Holder, Heavy Duty	3.0	Pcs	_____	_____
<b>D.3</b>	<b>Staff</b>				
	Laminated Glass Stripe partition - Upper Glass& Laminated Surface with Aluminum trims, channel& raceway, 1.2m(L) x 1.2m(H) x 45mm Thk.	6.0	Pc	_____	_____

## BILL OF MATERIALS AND COST ESTIMATE

Item	Description	Quantity	Unit	Unit Cost	Amount
	Laminated Glass Stripe partition - Upper Glass& Laminated Surface with Aluminum trims, channel& raceway, 0.70m(L) x 1.2m(H) x 45mm Thk.	9.0	Pc		
	Table top with PVC Edge banding grpmets and table metal bracket. 1.20m(L) x 0.6m(W), 25mm Thk.	6.0	Pc		
	Modular File Rack	6.0	Pc		
	Computer Keyboard	6.0	Pcs		
	Mobile Cabinets, with centralized lock	6.0	Pcs		
	CPU Holder, Heavy Duty	6.0	Pcs		
<b>E.</b>	<b>FURNITURES</b>				
<b>E.1</b>	<b>Waiting Area</b>				
	3-Seaters Sofa w/ 2 1-seater sofa set & corner table	1.0	Set		
<b>E.2</b>	<b>Others</b>				
	Round Table, 1.2m dia., wood	1.0	Pc		
	Lateral File, 45cm(D) x 90cm0(L) x 100cm(H), 3 Drawers	23.0	Sets		
				<b>Direct Cost</b>	
<b>V</b>	<b>PAINTING WORKS</b>				
	Flatwall Enamel, Boysen	15.00	Gals		
	Quick drying enamel, Boysen	12.00	Gals		
	Flat Latex White, Non Odor	20.00	Gals		
	Semi-Gloss Latex, Non Odor	20.00	Gals		
	Paint Thinner	12.00	Gal		
	Clear Gloss Lacquer	6.00	Gal		
	Lacquer Flo	6.00	Gal		
	Sanding Sealer	8.00	Gal		
	Lacquer Thinner	8.00	Gal		
	Sand Paper# 100 (3M)	10.00	mtrs.		
	Sand Paper# 400 (Eagle/Rhino)	25.00	Pcs.		
	Sand Paper# 150 (Eagle/Rhino)	25.00	Pcs.		
	Waste Cotton ( Single ply white )	20.00	Kls.		
	Roller Paint w/ plate size 7"	5.00	Pcs.		
	Mini roller ( cloth )	5.00	Pcs.		
	Paint Brush size "1"	8.00	Pcs.		
	Paint Brush size "2"	8.00	Pcs.		
	Paint Brush size 3"	8.00	Pcs.		
				<b>Sub-total</b>	
<b>VI</b>	<b>ELECTRICAL WORKS &amp; FIXTURES</b>				
<b>VI.1</b>	<b>ELECTRICAL WORKS &amp; FIXTURES</b>				
	Lighting fixtures, 2 x 36W, louver type, reflectorized	52.00	Sets		
	Convenience outlet, 2 gang and 3 prong, universal w/ face plate and utility/amco box	76.00	Sets		
	Switch, 2-gang, w/ face plate cover & utility box	14.00	Sets		
	Switch, 1-gang, w/ face plate cover & utility box	3.00	Sets		
	Switch, 1-gang, w/ face plate cover, 3-way	1.00	Set		
	THHN Wire, 3.5 mm2	7.00	Boxes		
	THHN Wire, 2.00 mm2 (Green)	3.00	Boxes		
	EMT pipe, 20mm diameter	67.00	Pcs.		
	EMT pipe connector, 20mm dia. assorted. (coupling/straight)	150.00	Pcs.		
	Flexible Hose, 15mm diameter, metal	60.00	Mtrs		
	Exhaust Fan (For CR & Pantry)	6.00	Units		
	Utility Box, 4" x 2", Metal/Plastic with cover	20.00	Pcs.		
	Utility Box, 4" x 4", Metal/Plastic with cover	30.00	Pcs.		
	Emergency Lights LED	5.00	Units		

## BILL OF MATERIALS AND COST ESTIMATE

Item	Description	Quantity	Unit	Unit Cost	Amount
	Electrical tape,big.	20.00	Pcs.	_____	_____
<b>VI.2</b>	<b>PANELBOARD</b>				
	20AT MCB Circuit Breaker	5.00	Pcs	_____	_____
	30AT MCB Circuit Breaker	7.00	Pcs	_____	_____
	50AT 3P MCB Circuit Breaker	5.00	Pcs	_____	_____
	50AT 2P MCB Circuit Breaker	3.00	Pcs	_____	_____
	200AT 3P MCCB Circuit Breaker	1.00	Pcs	_____	_____
	300AT 3P Square D Circuit Breaker	1.00	Pcs	_____	_____
	80mm THHN/THWN Stranded Wire	300.00	Mtrs	_____	_____
	63mm PVC Electrical Orange Conduit Pipe	20.00	Pcs	_____	_____
	Electrical Panel Board (1000x600x200mm)	1.00	Pc	_____	_____
				<b>Sub-total</b>	_____
<b>VII</b>	<b>SUPPLY &amp; INSTALLATION OF GLASS WALL PARTITIONS &amp; DOORS</b>				
VII.1	Glass Wall Partition with Powder Coated Alum Frame 1/4' thk. complete accessories (shade of Green color)	50.00	Sq. M	_____	_____
VII.1	Glass Doors with Powder Coated Alum. Frame 0.90 x 2.1 x 3/8' thk. complete accessories(shade of Green color)	4.00	Sets	_____	_____
VII.2	Supply, Delivery & Installation of Glass Receiving Counter w/ 2 small sliding windows, 12mm thk. (shade of Green color)	1.00	Lot	_____	_____
VII.3	Transfer & modification of existing main entrance door w/ fixed glass partitions w/ complete accessories	1.00	Lot	_____	_____
				<b>Sub-total</b>	_____
<b>VIII</b>	<b>OTHERS</b>				
VIII.1	Floor Finishes-Laminated Flooring Supply and Installation of Laminated Flooring with thickness of 8.3mm (Color & design are subject for approval)	318.00	Sq. M.	_____	_____
VIII.2	Supply & installation of Combination Blinds (Color & design are subject for approval) All windows & all glass partition walls	968.00	Sq. Ft.	_____	_____
				<b>Sub-total</b>	_____
<b>IX</b>	<b>MECHANICAL WORKS-SUPPLY &amp; INSTALLATION OF AIR-CONDITIONING UNITS</b>				
IX.1	OEO Wall Mounted,1.5HP, Inverter	1.00	Unit	_____	_____
	Ceiling Cassette, 3.0TR Inverter	1.00	Unit	_____	_____
IX.2	ORSN Ceiling Cassette, 3.0TR Inverter	2.00	Units	_____	_____
IX.3	OPDR Ceiling Cassette, 3.0TR Inverter	1.00	Unit	_____	_____
IX.4	OAFS Ceiling Cassette, 3.0TR Inverter	1.00	Unit	_____	_____
IX.5	Common Areas Wall Mounted, 1.5HP, Inverter (Receiving Area)	1.00	Unit	_____	_____
	Ceiling Ventilation Fan	3.00	Units	_____	_____
				<b>Sub-total</b>	_____
<b>X</b>	<b>STRUCTURED CABLING</b>				
	Termination of additional network outlets including roughing-ins, category 6 cables, information outlets, faceplates, etc.	60.00	units	_____	_____
	Patch Panel 24 port UTP Category 6	3.00	Units	_____	_____
	Wire Manager	3.00	Units	_____	_____

## BILL OF MATERIALS AND COST ESTIMATE

Item	Description	Quantity	Unit	Unit Cost	Amount
	24 port 10/100 managed switch	3.00	Units	_____	_____
	UTP patch cord (2meters)	60.00	Mtrs	_____	_____
	UTP patch cord (3meters)	60.00	Mtrs	_____	_____
	Data Cabinet 19" x 4'	1.00	Unit	_____	_____
	6 Core Fiber Cable 50 Micron Multimode Indoor/Outdoor	150.00	Mtrs	_____	_____
	1000Base-SX SFP Transceiver Module compatible with existing distribution switch	1.00	Unit	_____	_____
	1000Base-SX SFP Transceiver Module compatible with manage switch	1.00	Unit	_____	_____
	4 Feet Data Cabinet	1.00	Unit	_____	_____
	UPS (3KVA) Uninterruptable Power Supply	1.00	Unit	_____	_____
				<b>Sub-total</b>	_____
				<b>GRAND TOTAL COST P</b>	=====

Project Duration: Ninety (90) Calendar Days

**PROJECT: RENOVATION OF THE OFFICE OF THE JUDICIAL AND BAR COUNCIL'S  
OFFICE OF THE EXECUTIVE OFFICER & OPERATING OFFICES**

LOCATION: 2nd Floor, Supreme Court-Court of Appeals (SCCA) Building

**SCOPE OF WORKS**

**I GENERAL REQUIREMENTS**

- I.1 Mobilization
- I.2 PPE & Safety
- I.3 Contract Close-out
  - a) Cleaning/Clearing
  - b) Demobilization
- I.4 As-Built Plans

**II SITE WORKS**

- II.1 Site Cleaning, Clearing & Disposal of construction debris
- II.2 Removal of existing ceramic floor tile & wall tiles @ Comfort Rooms
- II.3 Removal of existing ceiling
- II.4 Reworks affected by the renovation

**III CIVIL WORKS**

- A.1 Construction of Partition Walls @ ORSN, OPDR& OAFS
- A.2 Construction of Hanging Cabinets & Shelves/Cabinets
- A.3 Replacement of Ceiling
- A.4 Doors & Openings
- A.5 Construction of new CR & Rehabilitation of existing Comfort Rooms
- A.6 Rehabilitation of Pantry Area

**IV SUPPLY & INSTALLATION OF MODULAR CUBICLES & FURNITURES**

**A. OFFICE OF THE EXECUTIVE OFFICER**

- A.1 Executive Officer
- A.2 L-Type Modular Cubicle - 3 Units
- A.3 Staff

**B. ORSN**

- B.1 Chief ORSN
- B.2 L-Type Modular Cubicle - 2 Units
- B.3 Staff

**C. OAFS**

- C.1 Chief OAFS
- C.2 L-Type Modular Cubicle - 3 Units
- C.3 Staff

**D. OPDR**

- D.1 Chief OPDR
- D.2 L-Type Modular Cubicle - 3 Units
- D.3 Staff

**E. FURNITURES**

- E.1 Waiting Area
- E.2 Others

**V PAINTING WORKS**

- V.1 Painting of all walls, cabinets & shelves

**VI ELECTRICAL WORKS & FIXTURES**

- VI.1 Supply & installation of electrical wires & fixtures (including roughing-ins)
- VI.2 Supply, install & assembly of Panelboards



# SCOPE OF WORKS

## VII SUPPLY & INSTALLATION OF GLASS WALL PARTITIONS & DOORS

- VII.1 Glass Wall Partition with Powder Coated Alum Frame  
1/4' thk. complete accessories (shade of Green color)
- VII.1 Glass Doors with Powder Coated Alum. Frame  
0.90 x 2.1 x 3/8' thk. complete accessories (shade of Green color)
- VII.2 Supply, Delivery & Installation of Glass Receiving Counter  
w/ 2 small sliding windows, 12mm thk. (shade of Green color)
- VII.3 Transfer & modification of existing main entrance door  
w/ fixed glass partitions w/ complete accessories

## VIII OTHERS

- VIII.1 Floor Finishes-Laminated Flooring  
Supply and Installation of Laminated Flooring  
with thickness of 8.3mm  
(Color & design are subject for approval)
- VIII.2 Supply & installation of Combination Blinds  
(Color & design are subject for approval)  
All windows & all glass partition walls

## IX MECHANICAL WORKS-SUPPLY & INSTALLATION OF AIR-CONDITIONING UNITS

- IX.1 OEO  
Wall Mounted, 1.5HP, Inverter  
Ceiling Cassette, 3.0TR Inverter
- IX.2 ORSN  
Ceiling Cassette, 3.0TR Inverter
- IX.3 OPDR  
Ceiling Cassette, 3.0TR Inverter
- IX.4 OAFS  
Ceiling Cassette, 3.0TR Inverter
- IX.5 Common Areas  
Wall Mounted, 1.5HP, Inverter (Receiving Area)  
Ceiling Ventilation Fan

## X STRUCTURED CABLING

- X.1 Termination of additional network outlets  
including roughing-ins, category 6 cables,  
information outlets, faceplates, etc.
- X.2 Patch Panel 24 port UTP Category 6
- X.3 Wire Manager
- X.4 24 port 10/100 managed switch
- X.5 UTP patch cord (2meters)
- X.6 UTP patch cord (3meters)
- X.7 Data Cabinet 19" x 4'
- X.8 6 Core Fiber Cable 50 Micron Multimode  
Indoor/Outdoor
- X.10 1000Base-SX SFP Transceiver Module compatible with  
existing distribution switch
- X.11 1000Base-SX SFP Transceiver Module compatible with  
manage switch
- X.12 4 Feet Data Cabinet
- X.13 UPS (3KVA) Uninterruptable Power Supply

**PROJECT: RENOVATION OF THE OFFICE OF THE JUDICIAL AND BAR COUNCIL'S  
OFFICE OF THE EXECUTIVE OFFICER & OPERATING OFFICES**

LOCATION: 2nd Floor, Supreme Court-Court of Appeals (SCCA) Building

**S U M M A R Y O F C O S T**

**I GENERAL REQUIREMENTS**

---

**II SITE WORKS**

---

**III CIVIL WORKS**

---

**IV SUPPLY & INSTALLATION OF MODULAR CUBICLES &  
FURNITURES**

---

**V PAINTING WORKS**

---

**VI ELECTRICAL WORKS & FIXTURES**

---

**VII SUPPLY & INSTALLATION OF GLASS WALL PARTITIONS  
& DOORS**

---

**VIII OTHERS**

---

**IX MECHANICAL WORKS-SUPPLY & INSTALLATION OF AIR-  
CONDITIONING UNITS**

---

**X STRUCTURED CABLING**

---

**Project: RENOVATION OF THE OFFICE OF THE JUDICIAL AND BAR COUNCIL'S  
OFFICE OF THE EXECUTIVE OFFICER AND OPERATING OFFICES**

**Location: 2nd Floor, Supreme Court-Court of Appeals Building (SCCA Building)**

**LIST OF KEY PERSONNEL PROPOSED TO BE ASSIGNED TO THE CONTRACT**

Business Name: \_\_\_\_\_

Business Address: \_\_\_\_\_

	<b>Project Manager (5 Years)</b>	<b>Project Engineer (5 Years)</b>	<b>Electrical Engineer (3 Years)</b>	<b>Information Technology (IT) (2 Year)</b>	<b>Master Plumber (1 Years)</b>	<b>Foreman (3 Years)</b>
1.Name						
2.Address						
3.Date of Birth						
4.Experience						
5.Previous Employment						
6.Education						
7.PRC License						
8.Cost of Biggest Project Handled						
9.Years of Experience in the Proposed Position						

**Position Note: This List must be supported by individual resumes of all personnel and photocopy of PRC Licenses of the Project Manager and Engineers.**

Submitted by :  
Designation :  
Date :

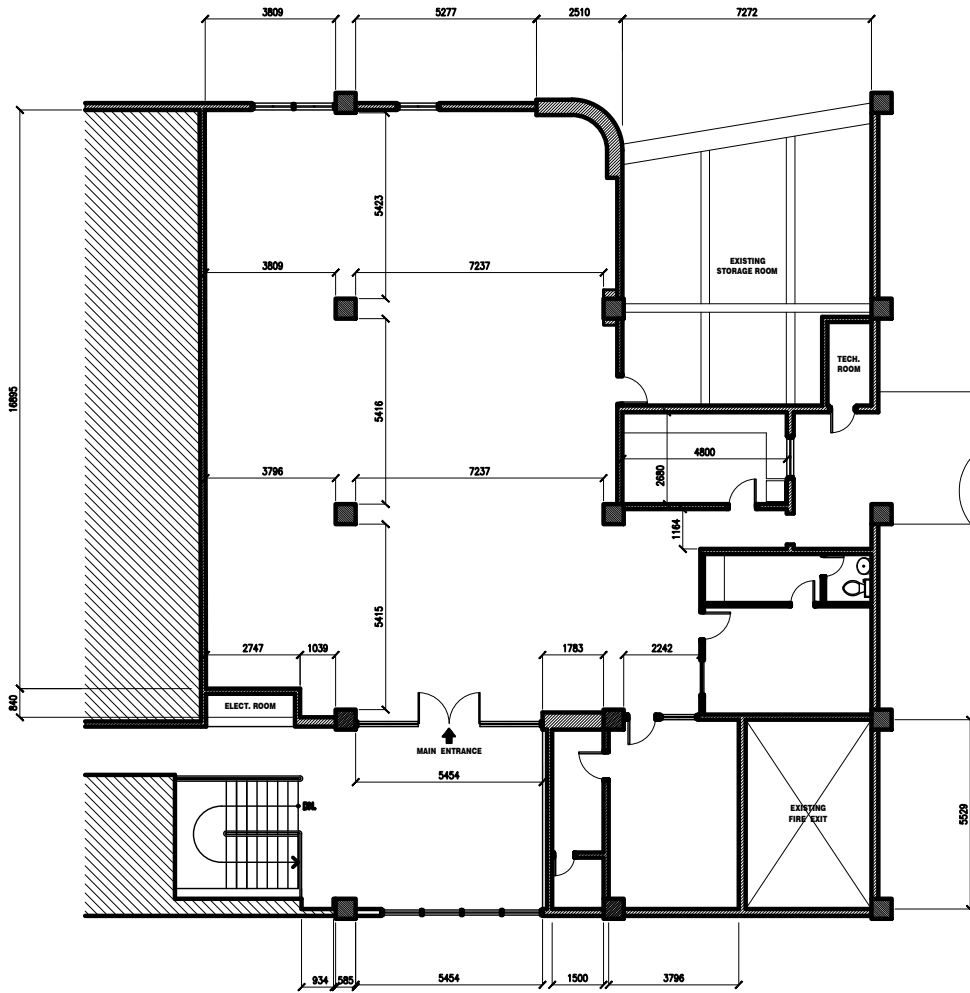
**Project: RENOVATION OF THE OFFICE OF THE JUDICIAL AND BAR COUNCIL'S  
OFFICE OF THE EXECUTIVE OFFICER AND OPERATING OFFICES**  
**Location: 2nd Floor, Supreme Court-Court of Appeals Building (SCCA Building)**

**List of Equipment, Owned or Leased and/or under Purchase Agreements, Pledged to the Proposed Contract**

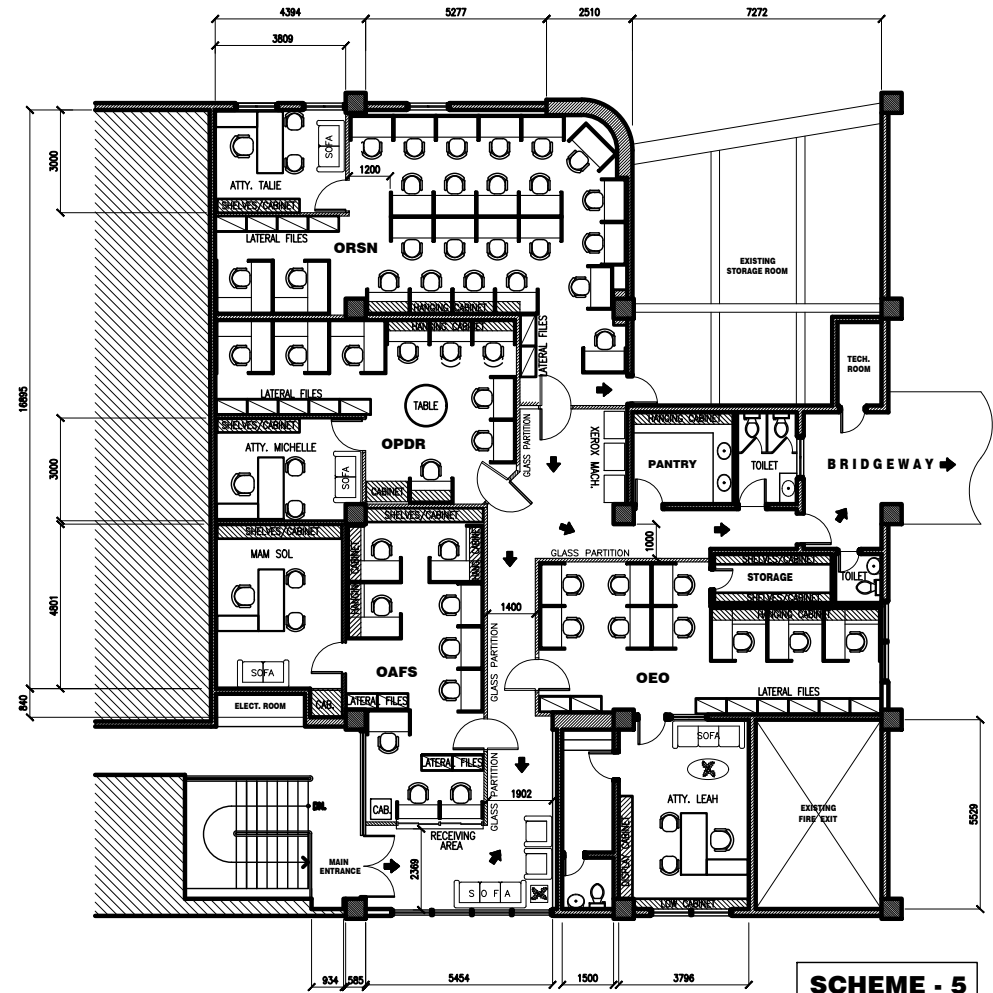
Business Name : \_\_\_\_\_  
 Business Address : \_\_\_\_\_

Description	Model/Year	Capacity / Performance / Size	Plate No.	Motor No. / Body No.	Location	Condition	Proof of Ownership / Lessor or Vendor
i. Elf Truck							
iii. H-Frames/Scaffoldings							
iv. Compressor							
v. Master Oxy-Acetylene Welding and Cut-off Outfit							

Submitted by : \_\_\_\_\_  
 Designation : \_\_\_\_\_  
 Date : \_\_\_\_\_



**1 AS-BUILT FLOOR PLAN**  
A-1 SCALE 1 : 100 MTS.



**2 PROPOSED FLOOR PLAN**  
A-1 SCALE 1 : 100 MTS.

**SCHEME - 5**  
(REVISED - 1)

**SUPREME COURT OF THE PHILIPPINES**  
PADRE FAURA ST. cor. TAFT AVE. ERMITA MANILA

PROJECT & LOCATION:  
**JUDICIAL AND BAR COUNCIL**  
(OFFICE OF THE EXECUTIVE OFFICER & OPERATING OFFICES)  
SECOND FLOOR, SC-CA BUILDING

PREPARED BY:  
**MAINTENANCE & GENERAL SERVICES DIVISION-OAS**  
ADD./TEL: OLD-ANNEX BLDG./525-7260/525-5769


No.	REVISIONS	DATE

SHEET CONTENTS	
<b>AS SHOWN</b>	
DATE:	DESIGNED BY: AL
DRAWN BY: Alesc	CHECKED BY:

SHEET No.  
**A-1**  
-OF-




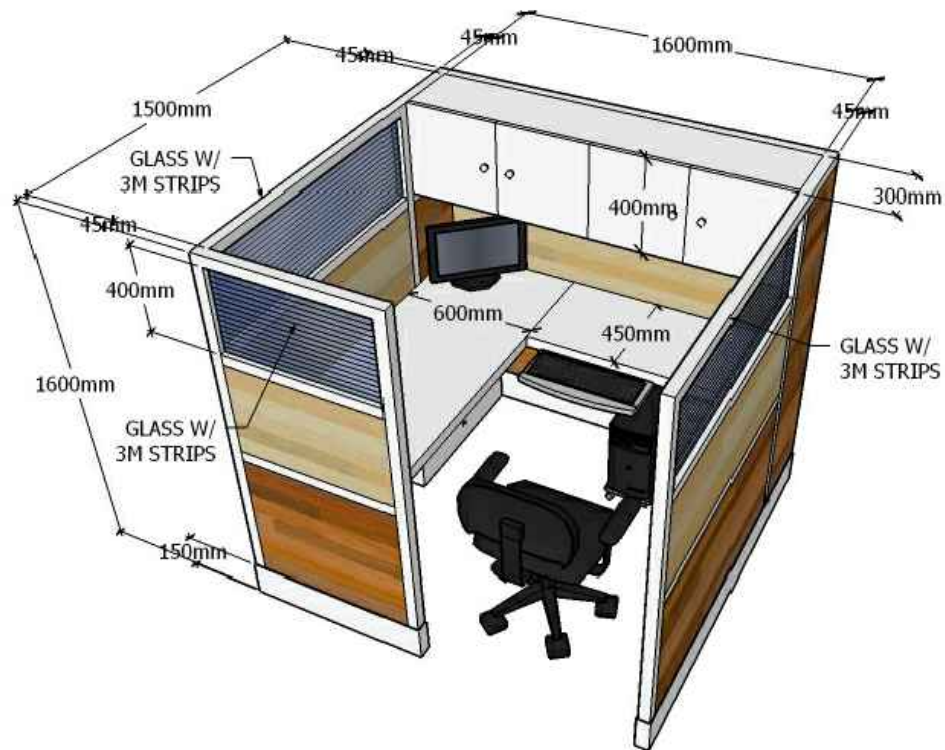
**1 PERSPECTIVE - 2**  
 A-2 NOT TO SCALE

 <p><b>SUPREME COURT OF THE PHILIPPINES</b>          PADRE FAURA ST. cor. TAFT AVE. ERMITA MANILA</p>	PROJECT & LOCATION: <b>JUDICIAL BAR COUNCIL</b> (OFFICE OF THE EXECUTIVE OFFICER & OPERATING OFFICES) SECOND FLOOR, SC-CA BUILDING	PREPARED BY: <b>MAINTENANCE &amp; GENERAL SERVICES DIVISION-OAS</b>	No.	REVISIONS	DATE	SHEET CONTENTS	SHEET No.
	AS SHOWN						<b>A-2</b>
	ADD./TEL: OLD-ANNEX BLDG./525-7260/525-5769			DATE: DRAWN BY: ALesc		DESIGNED BY: AL CHECKED BY:	-OF-




**1 PERSPECTIVE - 1**  
 A-3 NOT TO SCALE

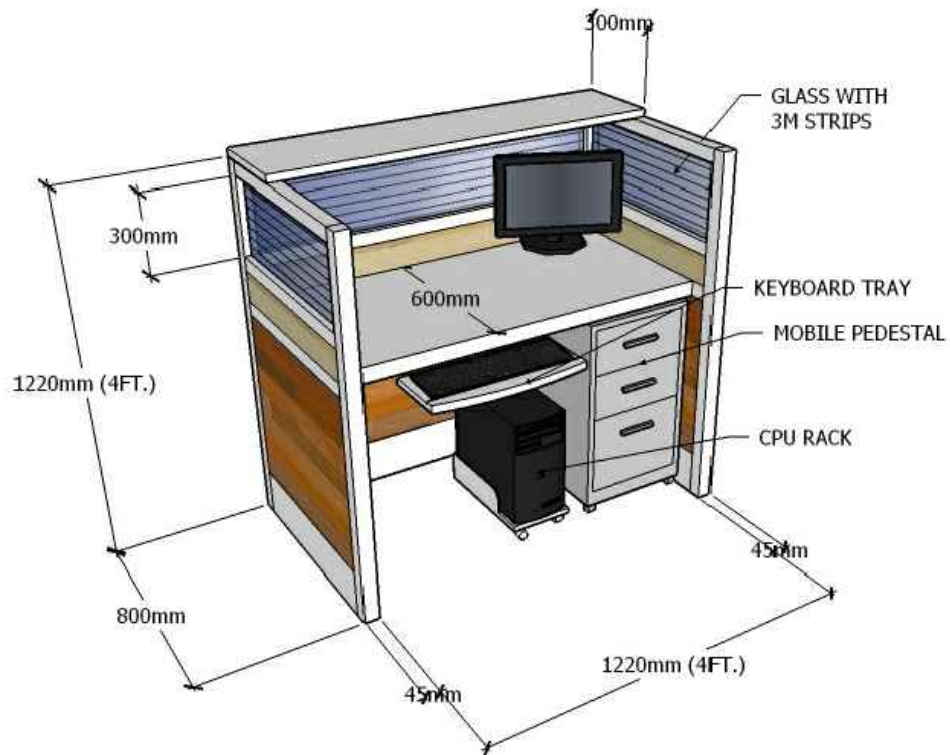
 <p><b>SUPREME COURT OF THE PHILIPPINES</b>          PADRE FAURA ST. cor. TAFT AVE. ERMITA MANILA</p>	PROJECT & LOCATION: <b>JUDICIAL BAR COUNCIL</b> (OFFICE OF THE EXECUTIVE OFFICER & OPERATING OFFICES) SECOND FLOOR, SC-CA BUILDING	PREPARED BY: <b>MAINTENANCE &amp; GENERAL SERVICES DIVISION-OAS</b> ADD./TEL: OLD-ANNEX BLDG./525-7260/525-5769	No.      REVISIONS      DATE	SHEET CONTENTS <p style="text-align: center;"><b>AS SHOWN</b></p>	SHEET No. <p style="text-align: center;"><b>A-3</b></p>
				DATE: DRAWN BY: ALesc	DESIGNED BY: AL CHECKED BY:




**1 LAWYERS CUBICLE DETAILS (TYPICAL)**  
 A-4 SCALE 1 : 100 MTS.

 <p><b>SUPREME COURT OF THE PHILIPPINES</b>          PADRE FAURA ST. cor. TAFT AVE. ERMITA MANILA</p>	PROJECT & LOCATION:	PREPARED BY:	No.	REVISIONS	DATE	SHEET CONTENTS	SHEET No.	
	<b>JUDICIAL BAR COUNCIL</b> (OFFICE OF THE EXECUTIVE OFFICER & OPERATING OFFICES) SECOND FLOOR, SC-CA BUILDING	MAINTENANCE & GENERAL SERVICES DIVISION-OAS					AS SHOWN	<b>A-4</b>
	ADD./TEL: OLD-ANNEX BLDG./525-7260/525-5769						DATE: DRAWN BY: ALesc	DESIGNED BY: AL CHECKED BY:





**1 STAFF CUBICLE DETAILS (TYPICAL)**  
 A-5 SCALE 1 : 100 MTS.

 <b>SUPREME COURT OF THE PHILIPPINES</b> PADRE FAURA ST. cor. TAFT AVE. ERMITA MANILA	PROJECT & LOCATION:	PREPARED BY:	No.	REVISIONS	DATE	SHEET CONTENTS	SHEET No.
	<b>JUDICIAL BAR COUNCIL</b> (OFFICE OF THE EXECUTIVE OFFICER & OPERATING OFFICES) SECOND FLOOR, SC-CA BUILDING	MAINTENANCE & GENERAL SERVICES DIVISION-OAS ADD./TEL: OLD-ANNEX BLDG./525-7260/525-5769				AS SHOWN	<b>A-5</b>
						DATE: DRAWN BY: ALesc	DESIGNED BY: AL CHECKED BY: